

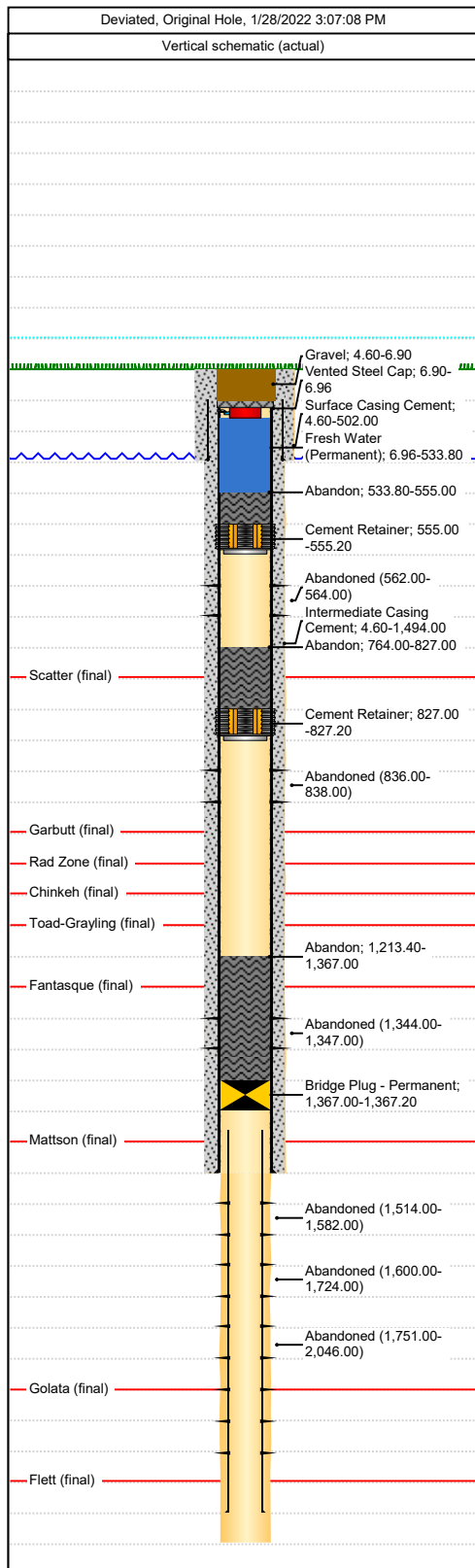














Tubing and Rods (Schematic)

Paramount
resources ltd.

Well Name: PARAMOUNT ET AL. FORT LIARD F-36

API/UWI 300/F-36/6010-12315/0	Surface Legal Location E-36/6010-12315	License # N1841	Field Name Liard	State/Province NorthWest Territories
Well Configuration Type Deviated	Original KB Elevation (m) 469.40	KB-Ground Distance (m) 4.60	KB-Casing Flange Distance (m)	KB-Tubing Head Distance (m)



<des> set at <depth>mKB on <dttmrun>													
Des		Set Depth (mKB)		Run Date		Lateral Position		Pull Date		Cut/Pull Date		Depth Cut/Pull (...)	
Item #	Item Description			Joints	Length (m)		OD (mm)	ID (mm)	Wt (kg/m)	Grade	Top (mKB)		Btm (mKB)
Comment													
Other In Hole													
Description				OD (mm)		Top Depth (mKB)		Btm (mKB)		Run Date		Mill/Pull Date	
Cement Retainer				161.8		555.00		555.20					
Comment													
Description				OD (mm)		Top Depth (mKB)		Btm (mKB)		Run Date		Mill/Pull Date	
Cement				161.8		533.80		555.00					
Comment													
Description				OD (mm)		Top Depth (mKB)		Btm (mKB)		Run Date		Mill/Pull Date	
Cement				161.8		764.00		827.00					
Comment													
Description				OD (mm)		Top Depth (mKB)		Btm (mKB)		Run Date		Mill/Pull Date	
Cement Retainer				161.8		827.00		827.20					
Comment													
Description				OD (mm)		Top Depth (mKB)		Btm (mKB)		Run Date		Mill/Pull Date	
Cement				161.8		1,213.40		1,367.00					
Comment													
Description				OD (mm)		Top Depth (mKB)		Btm (mKB)		Run Date		Mill/Pull Date	
Bridge Plug - Permanent				161.8		1,367.00		1,367.20					
Comment													
Description				OD (mm)		Top Depth (mKB)		Btm (mKB)		Run Date		Mill/Pull Date	
Fresh Water (Permanent)				161.8		6.96		533.80		1/13/2022 11:00			
Comment													
Description				OD (mm)		Top Depth (mKB)		Btm (mKB)		Run Date		Mill/Pull Date	
Vented Steel Cap				177.8		6.90		6.96		1/13/2022 12:00			
Comment													
Description				OD (mm)		Top Depth (mKB)		Btm (mKB)		Run Date		Mill/Pull Date	
Gravel				177.8		4.60		6.90		1/13/2022 12:01			
Comment													
Partial BHA set at <Set Depth?> on 1/25/2022 06:55													
String Description				Run Date				Set Depth (mKB)				Pull Date	
Partial BHA				1/25/2022									
Item Description						Joints	Length (m)	OD (mm)	Wt (kg/m)	Grade			
Tubing						3	29.08	60.3	6.990	L-80			
Comment													
cut off at 1367.5 mKB													
Item Description						Joints	Length (m)	OD (mm)	Wt (kg/m)	Grade			
Profile Nipple						0	0.20	60.3	6.990	L-80			
Comment													
"X" Nipple													
Item Description						Joints	Length (m)	OD (mm)	Wt (kg/m)	Grade			
Tubing Pup Joint						1	1.27	60.3	6.990	L-80			
Comment													
pup joint, L-80, 6.99 kg/m													

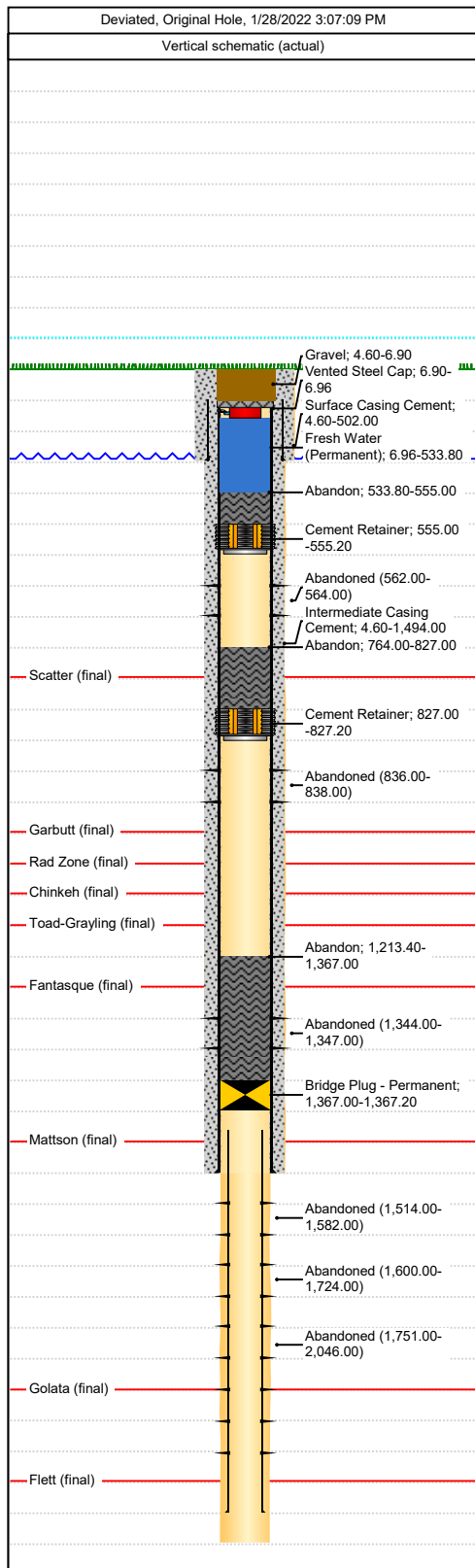


Tubing and Rods (Schematic)

Paramount
resources ltd.

Well Name: PARAMOUNT ET AL. FORT LIARD F-36

API/UWI 300/F-36/6010-12315/0	Surface Legal Location E-36/6010-12315	License # N1841	Field Name Liard	State/Province NorthWest Territories
Well Configuration Type Deviated	Original KB Elevation (m) 469.40	KB-Ground Distance (m) 4.60	KB-Casing Flange Distance (m)	KB-Tubing Head Distance (m)



Item Description On Off Tool		Joints 1	Length (m) 0.44	OD (mm) 114.0	Wt (kg/m) 6.990	Grade L-80
Comment L-10 On/Off						
Item Description Packer		Joints 1	Length (m) 2.43	OD (mm) 114.0	Wt (kg/m) 6.990	Grade L-80
Comment FH 10 K Hydraulic Set Packer						
Item Description Profile Nipple		Joints 1	Length (m) 0.28	OD (mm) 60.3	Wt (kg/m) 6.990	Grade L-80
Comment Profile Nipple						
Item Description Tubing Pup Joint		Joints 1	Length (m) 0.63	OD (mm) 60.3	Wt (kg/m) 6.990	Grade L-80
Comment pup joint, L-80, 6.99 kg/m						
Item Description On Off Tool (non skirted)		Joints 1	Length (m) 0.44	OD (mm) 114.0	Wt (kg/m) 6.990	Grade L-80
Comment On/Off (non skirted)						
Perforation Statuses						
Top (mKB)	Top (TVD) (mKB)	Btm (mKB)	Btm (TVD) (mKB)	Date	Status	
562.00	561.99	564.00	563.99	1/16/2022	Abandoned	
836.00	835.99	838.00	837.99	1/16/2022	Abandoned	
1,344.00	1,343.89	1,347.00	1,346.89	1/16/2022	Abandoned	
1,514.00	1,513.75	1,582.00	1,581.74	1/16/2022	Abandoned	
1,600.00	1,599.72	1,724.00	1,723.61	1/16/2022	Abandoned	
1,751.00	1,750.59	2,046.00	2,045.11	1/16/2022	Abandoned	